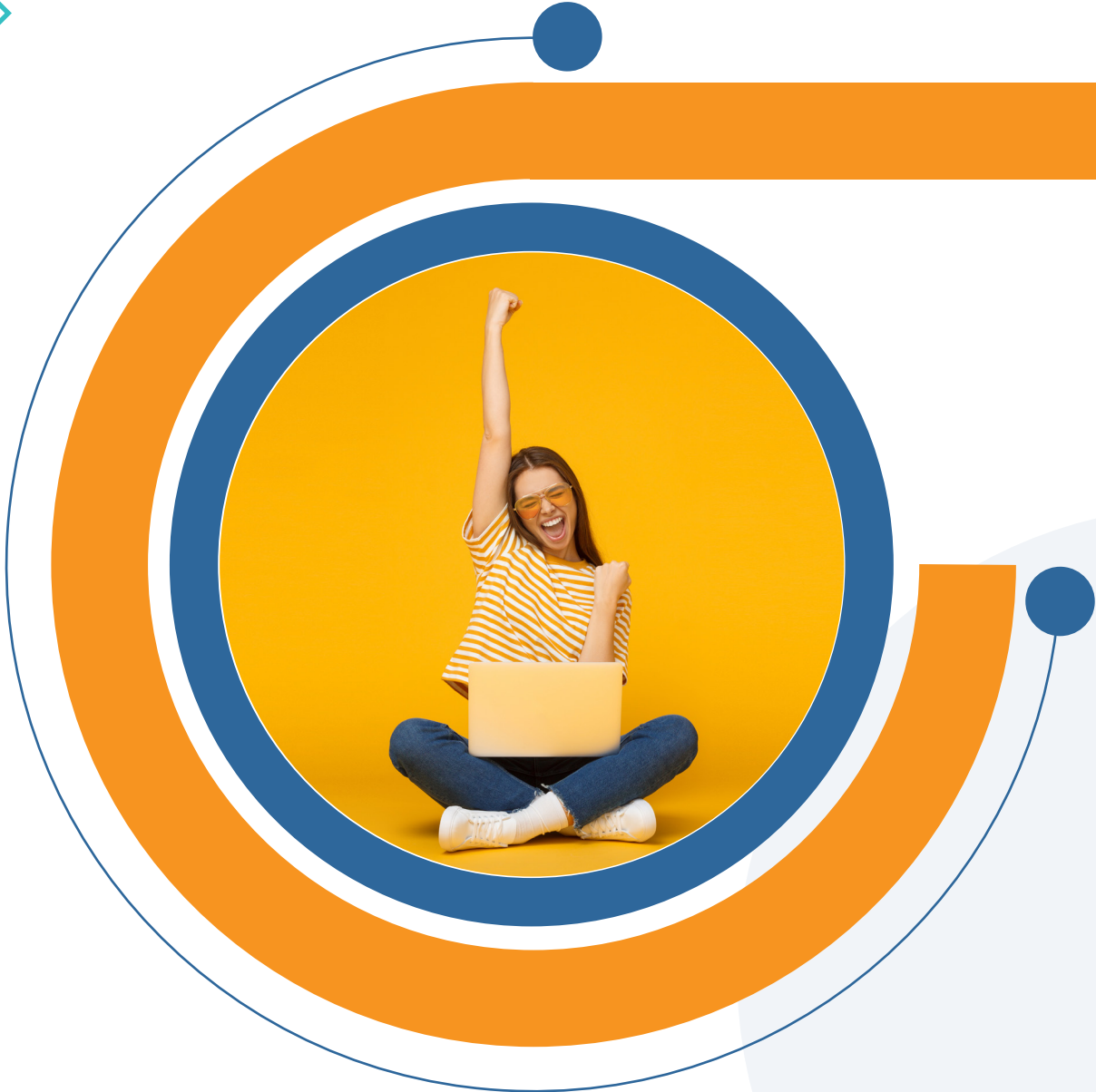




21ST CENTURY  
**LEADERS**



**LEADERSHIP CONNECT**  
WELCOME PACKET

# TABLE OF CONTENTS



Welcome to 21st Century Leaders	03
Leadership Connect Overview	04
Incentives	06
Lesson Roadmap: Level 1	08
Lesson Roadmap: Level 2	11
Lesson Roadmap: Level 3	14
Lesson Roadmap: Level 4	17

# 21ST CENTURY LEADERS

## PROGRAM HIGHLIGHTS

**21st Century Leaders** is an elite and diverse group of like-minded high school students from across the state of Georgia. Each 21st Century Leader is exposed to hands-on experiences, exclusive summer leadership institutes, leadership training and has access to a network of leading Georgia business and professional leaders. Participants transform and develop their skills and attitude through our leadership programs, inspiring them to be a leader in their community, their career and beyond.



Here are possible entry points into the program:

### Leadership Connect

Online learning platform focused on leadership competencies and career exploration  
*Enrollment open during school-year*

### Summer Leadership Institutes

One-week residential programs on college campuses focused on leadership development and career exploration  
*Takes place in June \*\*Application Based*

### 21CLubs

Bring 21st Century Leaders to your school! 21CLubs are school-based programs centered on leadership and career pathway skills.  
*Start/Join during school-year*

And here are all of the amazing opportunities students have access to in addition to the programs listed above:

#### ✓ Internships/Job-Shadowing

Eligible 21CL students can be selected for internship/job shadowing experiences with corporate partners.  
*Availability: Throughout the school-year*

#### ✓ Youth Ambassadors

You are afforded the unique opportunity to be the face and voice of the 21CL organization.  
Teams include:  
- Youth Ambassadorship  
- Youth Leadership Council  
- Youth Task Force

#### ✓ Leadership Summits

Each one to two day leadership summit focuses on different career pathways and leadership skills.  
*Availability: Fall Semester & Spring Semester*

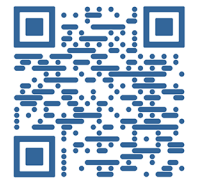
#### ✓ Service Projects Workshops & Experiences

21CL's service projects, drives and workshops are led by 21CL students and provide a wonderful opportunity for participants to gain project management and other valuable skills.  
*Availability: Throughout the school-year*

#### ✓ Georgia Youth Leadership Awards

21CL Corporate Professionals & Partners select and award the top 21 high school student leaders within 21st Century Leaders that are doing extraordinary things.  
*Availability: February or March*

Scan to  
Learn More!





# Leadership Connect

**Leadership Connect®** is 21st Century Leaders' proprietary online learning platform designed for and used by high school aged students to learn about their role as a leader and discover and demonstrate their leadership abilities and career interests. Students can enroll at any time in their high school career and be connected with their peers through a series of gamified lessons, hands-on activities, and exclusive opportunities. 21CL designed this platform with an EPIC approach and the following goals:

## Engaging

(fun and unique learning experience)

## Participatory

(active and ongoing)

## Interactive

(employer and training driven)

## Connected

(interest driven/social developmental)

21st Century Leaders is proud to partner with Atlanta-based company RALI since 2017, in which platform Leadership Connect content is housed. This learning and change digital company uses proven "learn, do, inspire" methodology to create an online journey that drives the adoption of mindsets and behaviors to improve performance outcomes.



## Program Highlights

- Earn a Leadership Certificate from Emory's Goizueta Business School only high schoolers in GA can receive through 21st Century Leaders
- Flexible, quick, and self-guided program plus a project-based/capstone level
- Gamified content
- Point-based incentives with rewards, special experiences, in-person programming, and digital badging
- Action-based with activities done at home, school or in their community
- Positive peer encouragement, connection & competition with discussion board and leaderboard
- Student mentoring opportunity with business professionals
- Multi-level program with over 175 modules
- Assessments implemented within each level
- Curriculum guide with course outline and targeted outcomes for parents and school and community leaders

## Lesson Topics

- Lessons centered on core leadership competencies (communicating effectively, self-development, building effective teams, problem solving, integrity & trust, action oriented, and career ambition)
- Social & Emotional Intelligence
- Diversity & Inclusion
- Financial Literacy
- Professionalism and Career Exploration
- Civic Engagement
- Health & Wellness
- Entrepreneurship
- Social Enterprise Capstone

## Level Flow



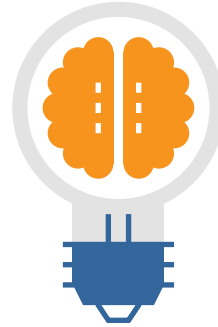
### Level 1:

The Journey  
7 Core Leadership  
Competencies +  
Career Exploration  
**47 modules**



### Level 2:

Social & Emotional  
Intelligence  
SEI & Diversity &  
Inclusion  
**46 modules**



### Level 3:

Life Ready  
Financial Literacy,  
Health & Wellness,  
Civic Engagement,  
Professionalism  
**30 modules**



### Level 4:

Social Enterprise  
Capstone  
Earn a Leadership  
Certificate from Emory  
University's Goizueta  
Business School  
**48 modules**

## Module Activity Highlights

**Learn Activity:** They serve as the main informational piece of Leadership Connect. With learn activities, students take on a series of challenges in which they can answer questions, read documents, watch videos, and/or engage in gamified activities in order to learn the desired topic and earn points.

**Question Type:** Once inside a lesson, there are a variety of question types that test comprehension. From free response to poll questions to multi-select to fill-in-the-blank, variety drives engagement and reduces monotony.

**Do Activity:** This activity is done after a lesson or series of lessons which prompts them to engage in an action-based activity outside of the system urging students to put what they've learned into action. The number of extra points that can be earned from this is displayed at the bottom and due dates can be set for these activities. The system administrator, teacher, or mentor can verify the students work before points are rewarded.

**Inspire Activity:** These are engagements that are optional for students and serve as a way for them to earn extra points as well as incentivize positive encouragement for themselves and for their peers!

For more information visit  
[www.21stcenturyleaders.org/student-programs](http://www.21stcenturyleaders.org/student-programs)



21ST CENTURY

# LEADERS

www.21stCenturyLeaders.org

## Leadership Connect Rewards Breakdown

**When you learn, you earn!**

Leadership Connect provides all kinds of cool incentives, rewards, and opportunities for you to connect, compete, and celebrate your leadership development!



### Level 1 Completion Rewards:

- 21CL Honor Cord (for your graduation year)
- Eligible to be nominated for 21CL's Georgia Youth Leadership Awards (GYLA)
- Level 1 Digital Badge Earned



### Level 2 Completion Rewards:

- All Level 1 rewards and incentives plus:
- Opportunity for special experiences with board members, executives, alumni, and more
- Eligible to apply for 21CL's Youth Ambassador program
- Skip application for summer leadership institute
- Level 2 Digital Badge Earned + 5 SEI Digital Badges



### Level 3 Completion Rewards:

- All previous Level 1 & 2 rewards and incentives plus:
- Eligible to apply for an internship and post-secondary scholarship
- Level 3 Digital Badge Earned



### Level 4 Completion Rewards:

- All previous Level 1, 2 & 3 rewards and incentives plus:
- Earn a Leadership Certificate from Emory University's Goizueta Business School + Level 4 Badge
- Join a leadership cohort
- Coached by a business mentor



# REWARDS FOR ALL LEVELS:

## #GIVEAWAYTHURSDAY

Hard work pays off! The more lessons you're completing in Leadership Connect the more opportunities you'll have to be put into **bi-weekly gift card drawings** throughout the school year (September- May). Winners will be announced and highlighted on social media!

## SOCIAL SPOTLIGHTS + PRIZES

You deserve to shine! The more points you earn, the more you'll get recognized through our social media platforms and monthly e-newsletters. From students climbing the Leaderboard throughout the school year to students completing "Do" activities, top students **will be spotlighted and even earn special prizes.**

## #RACETO1000

"Slow is smooth and smooth is fast!" Stay consistent in the race to 1,000 points by Columbus Day and be automatically entered into a drawing to **win tickets to things like sporting events, museums, theaters, etc.!**

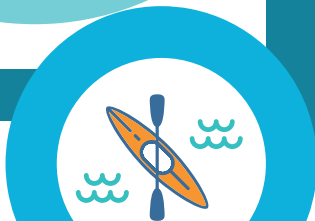
## HIGH LEVEL LEADER

You're next level awesome! The top 8-10 students on the Leaderboard for each level by end of the school year will receive a **special experience/prize!**

## LEVEL UP!

Earn the opportunity to score these special bonus experiences:

- Virtual workshops
- Live, in-person summits
- Paid summer internship (graduating seniors only)



## Earnable Points Per Level:

- Level 1- 1690
- Level 2- 1405
- Level 3- 1500
- Level 4- 1080



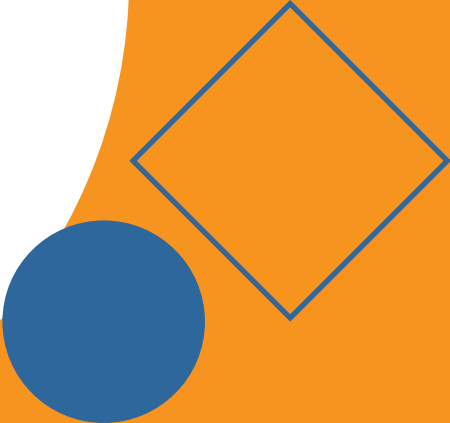
## Leadership Connect Rewards Breakdown

Questions?

Contact: [lc@21stcenturyleaders.org](mailto:lc@21stcenturyleaders.org)



# LESSON ROADMAP LEVEL 1



While Leadership Connect is self-paced, this roadmap and benchmarks are designed to support you along your leadership journey to help you stay on track. Feel free to adjust and edit as it fits your needs and schedule!

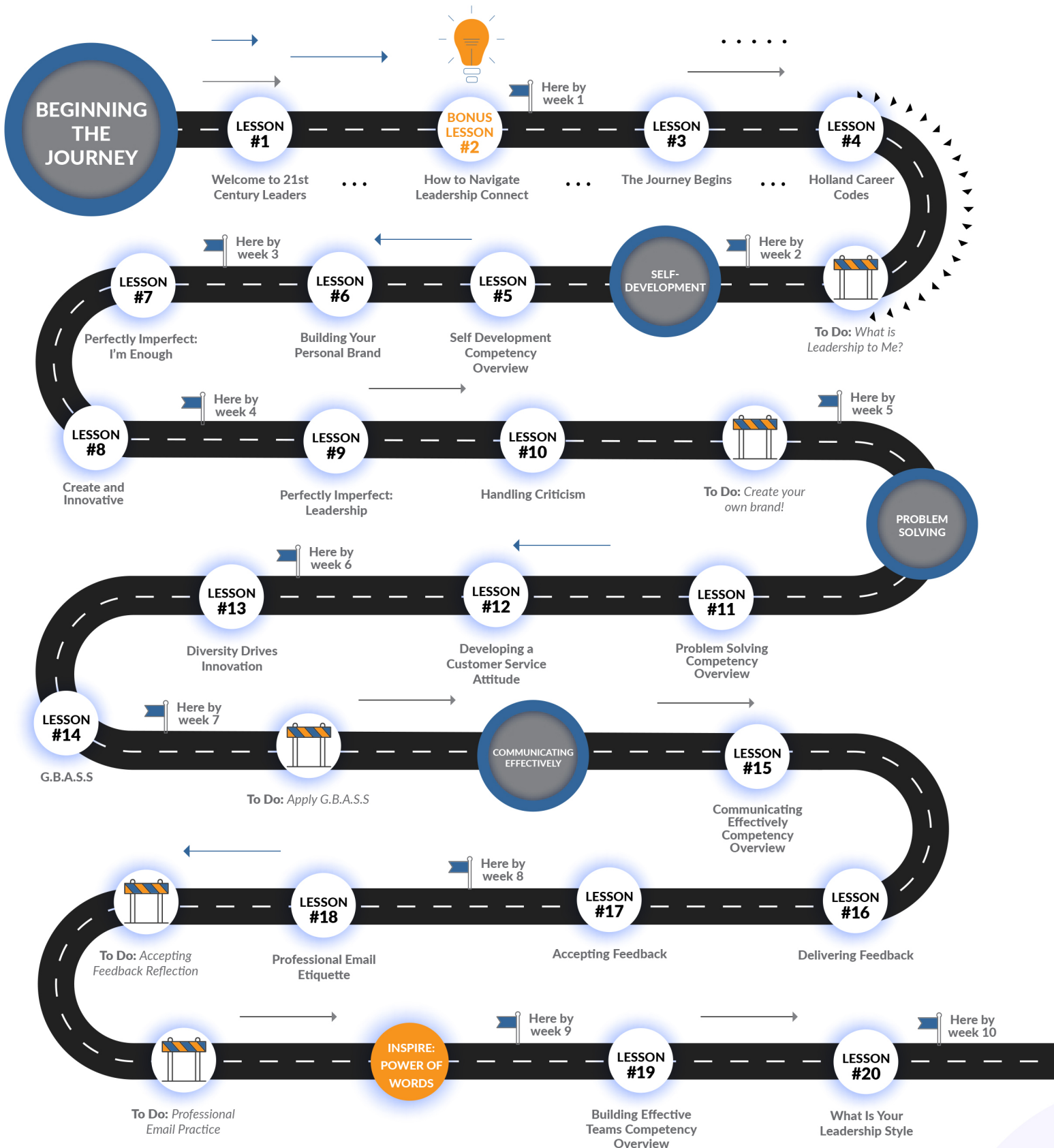




# LEADERSHIP CONNECT LESSON ROADMAP: LEVEL 1

DISCOVER THE 7 CORE LEADERSHIP COMPETENCIES

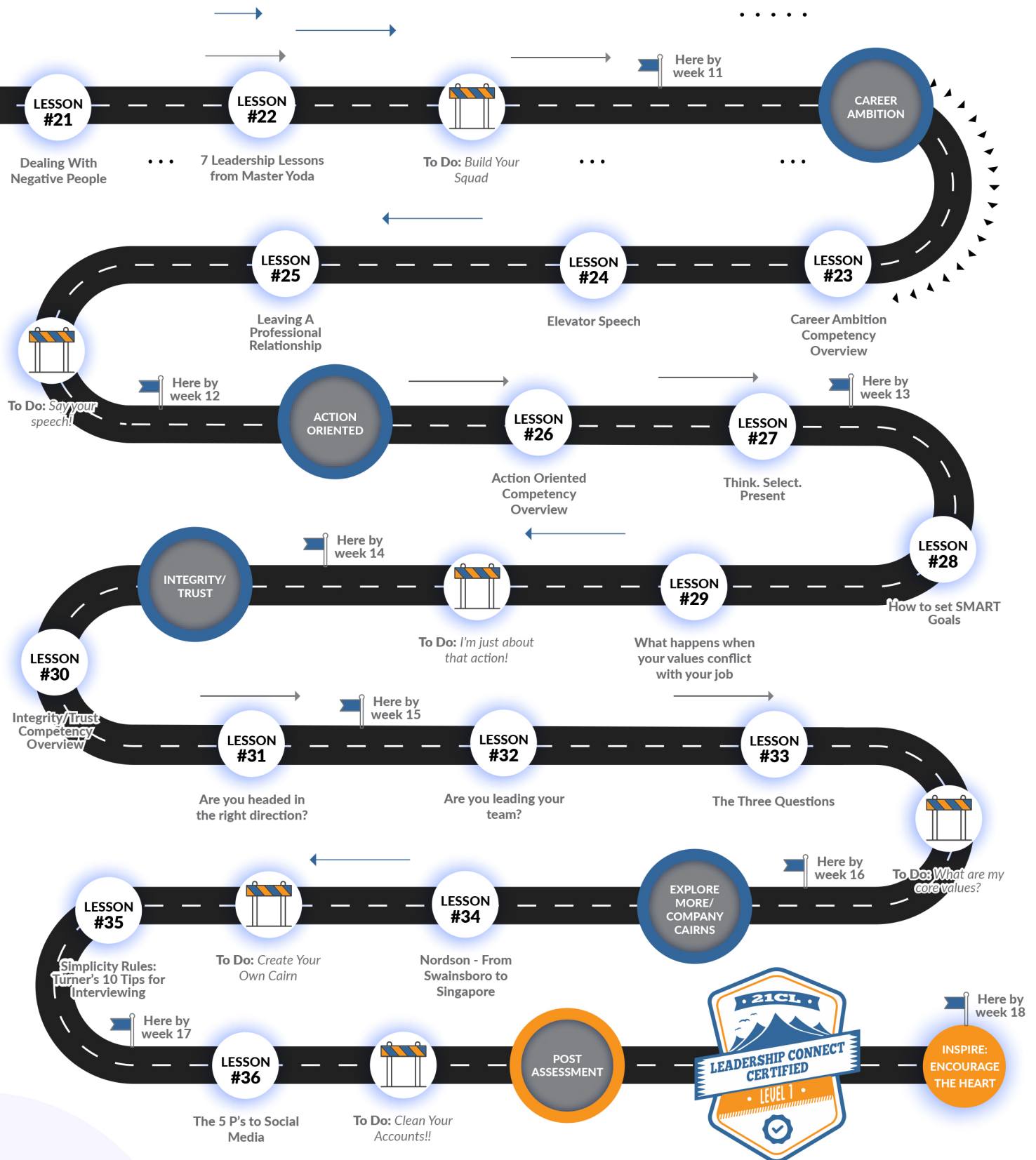
TOTAL EARNABLE POINTS: 1690  
36 LESSONS | 11 ACTION ITEMS



# LEADERSHIP CONNECT LESSON ROADMAP: LEVEL 1 (cont.)

EXPLORE THE 7 CORE LEADERSHIP COMPETENCIES

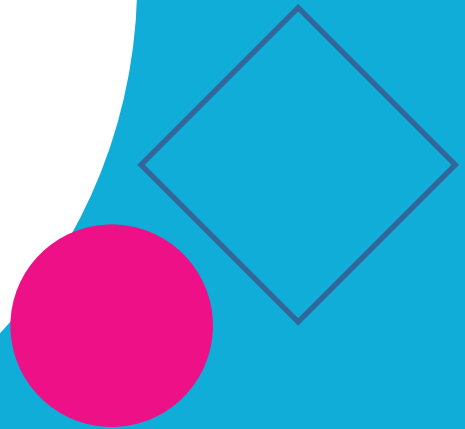
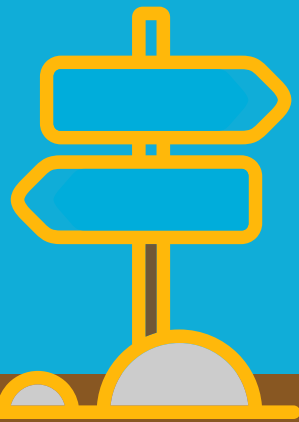
TOTAL EARNABLE POINTS: 1690  
36 LESSONS | 11 ACTION ITEMS



# LESSON ROADMAP LEVEL 2

EXPLORE SOCIAL AND EMOTIONAL  
INTELLIGENCE

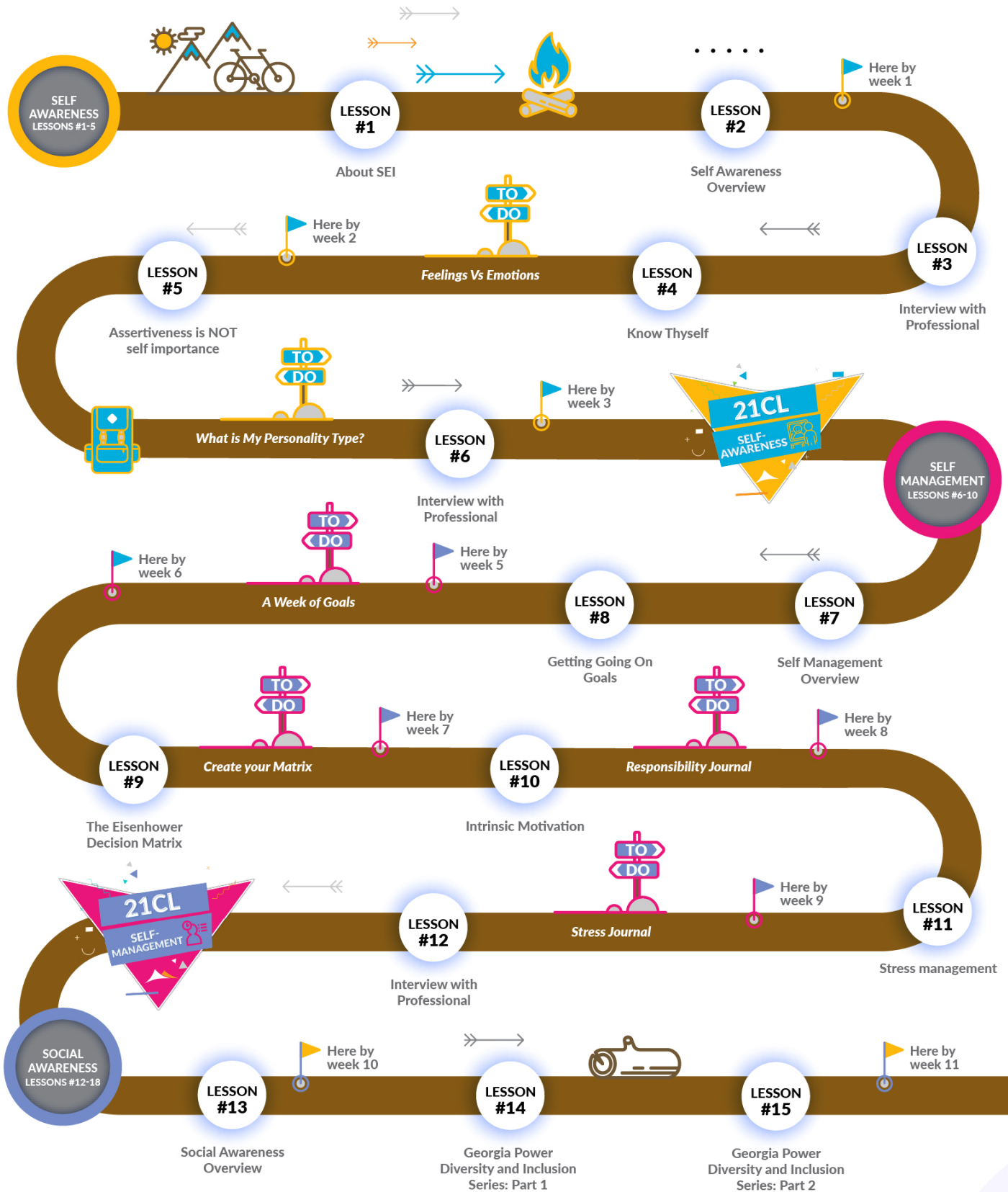
While Leadership Connect is self-paced, this roadmap and benchmarks are designed to support you along your leadership journey to help you stay on track. Feel free to adjust and edit as it fits your needs and schedule!



# LEADERSHIP CONNECT LESSON ROADMAP: LEVEL 2

## EXPLORE SOCIAL & EMOTIONAL INTELLIGENCE

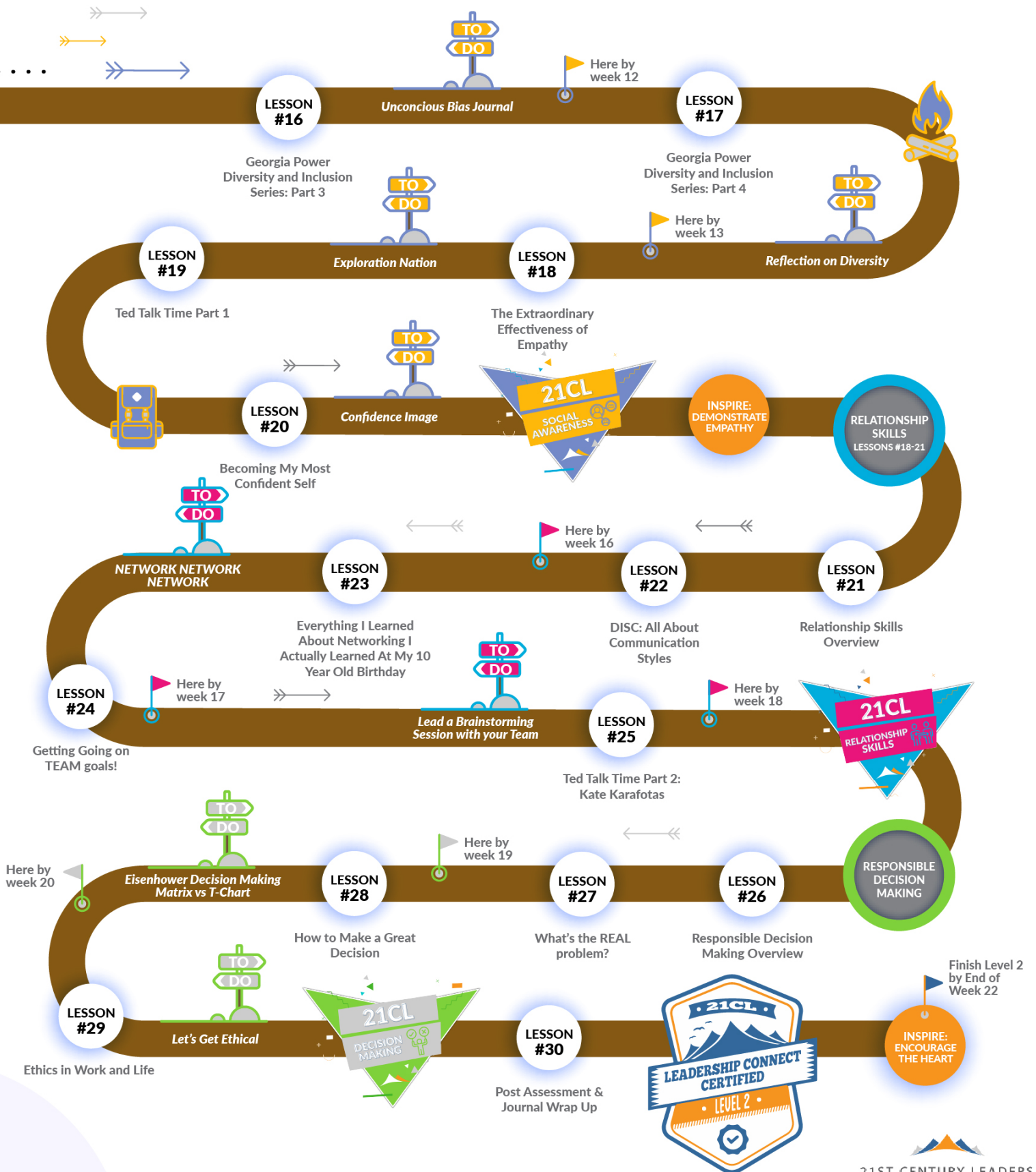
TOTAL EARNABLE POINTS: 1410  
31 LESSONS | 15 ACTION ITEMS



# LEADERSHIP CONNECT LESSON ROADMAP: LEVEL 2 (cont.)

EXPLORE THE 7 CORE LEADERSHIP COMPETENCIES

TOTAL EARNABLE POINTS: 1410  
31 LESSONS | 15 ACTION ITEMS



# LESSON ROADMAP LEVEL 3

MASTERY OF LIFE READY SKILLS

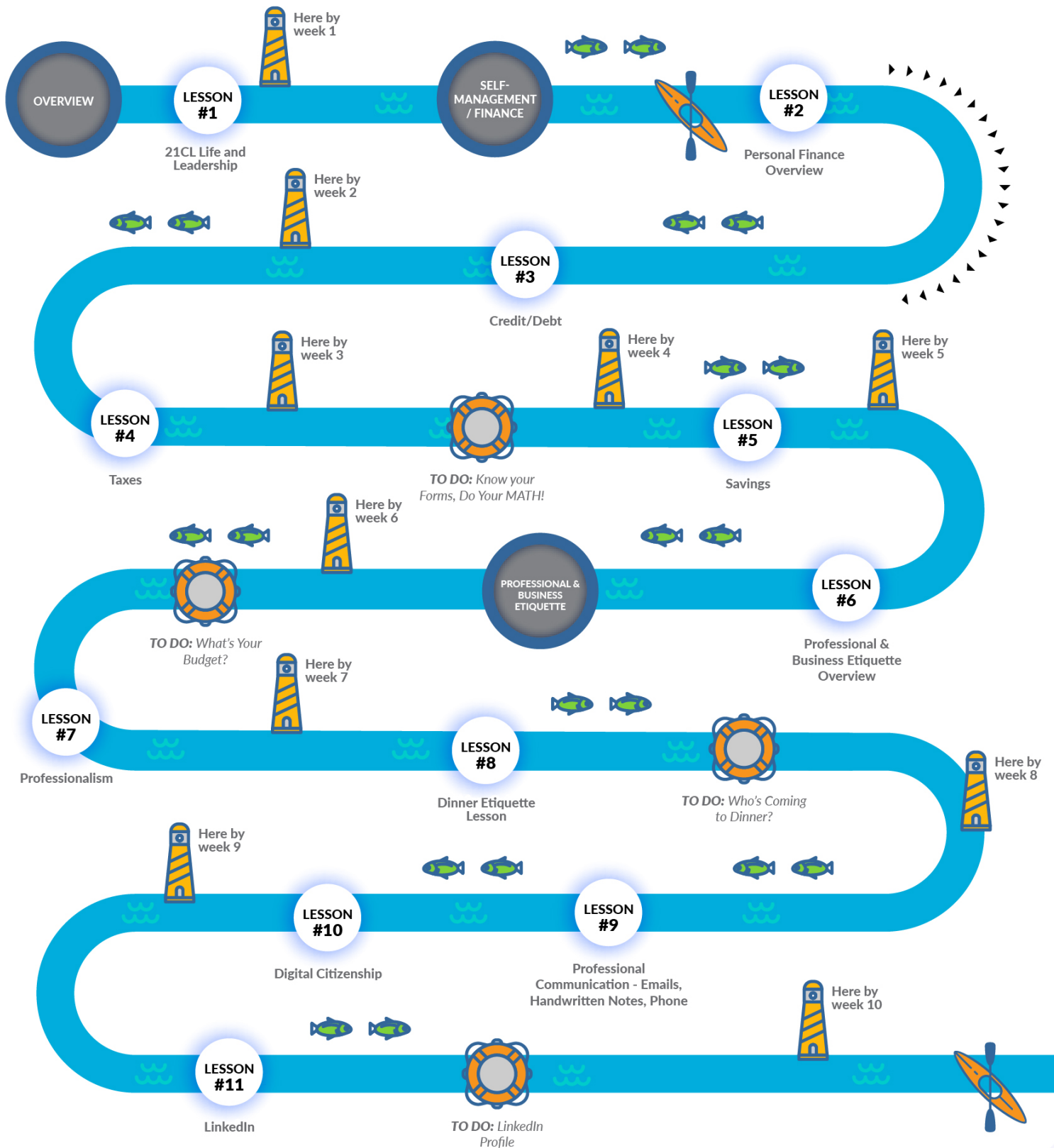


While Leadership Connect is self-paced, this roadmap and benchmarks are designed to support you along your leadership journey to help you stay on track. Feel free to adjust and edit as it fits your needs and schedule!

# LEADERSHIP CONNECT LESSON ROADMAP: LEVEL 3

## MASTERY OF LIFE READY SKILLS

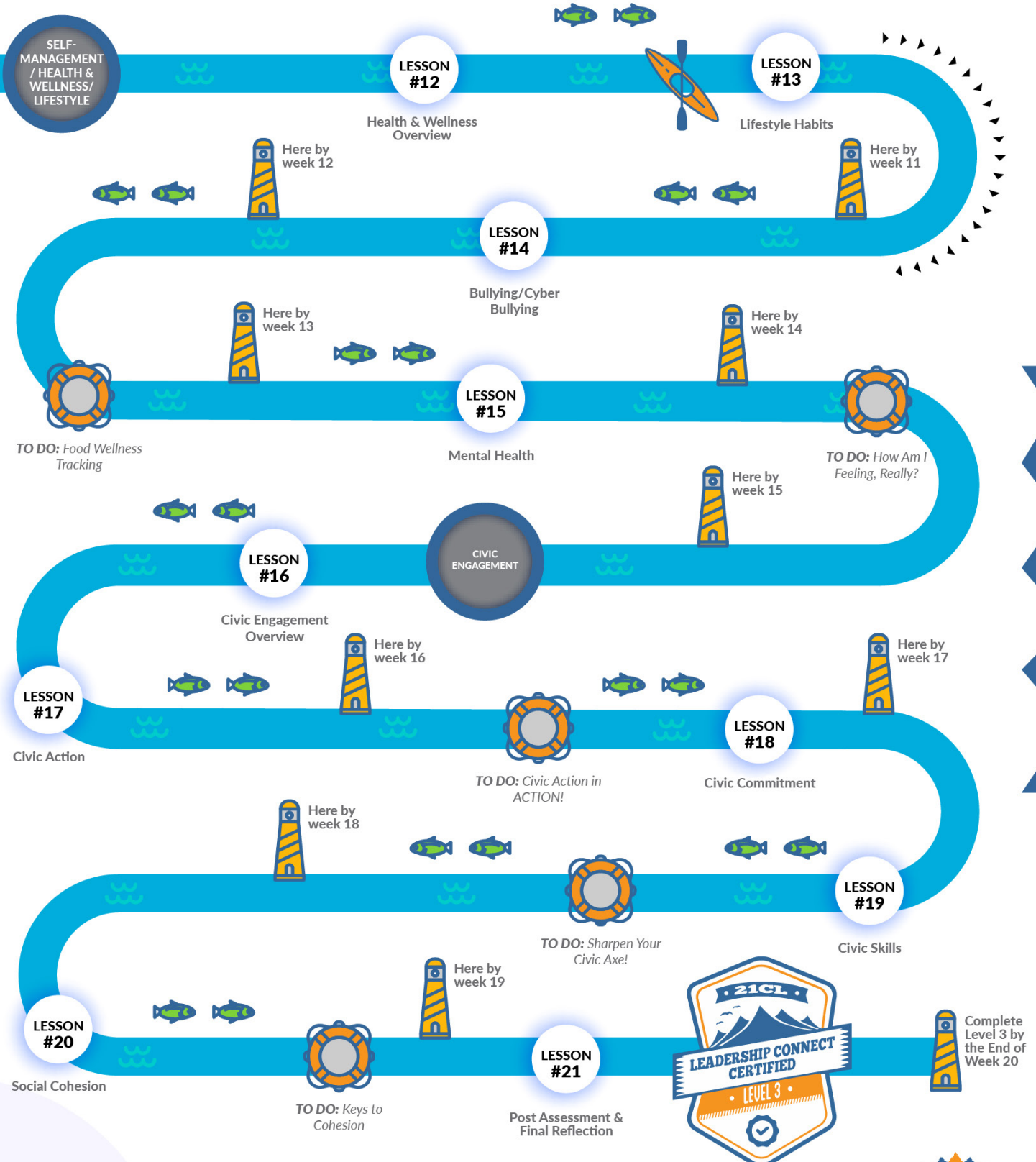
TOTAL EARNABLE POINTS: 1500  
20 LESSONS | 10 ACTION ITEMS



# LEADERSHIP CONNECT LESSON ROADMAP: LEVEL 3 (cont.)

## MASTERY OF LIFE AND LEADERSHIP

TOTAL EARNABLE POINTS: 1500  
20 LESSONS | 10 ACTION ITEMS







# LESSON ROADMAP LEVEL 4

SOCIAL ENTERPRISE CAPSTONE



EMORY

GOIZUETA  
BUSINESS  
SCHOOL

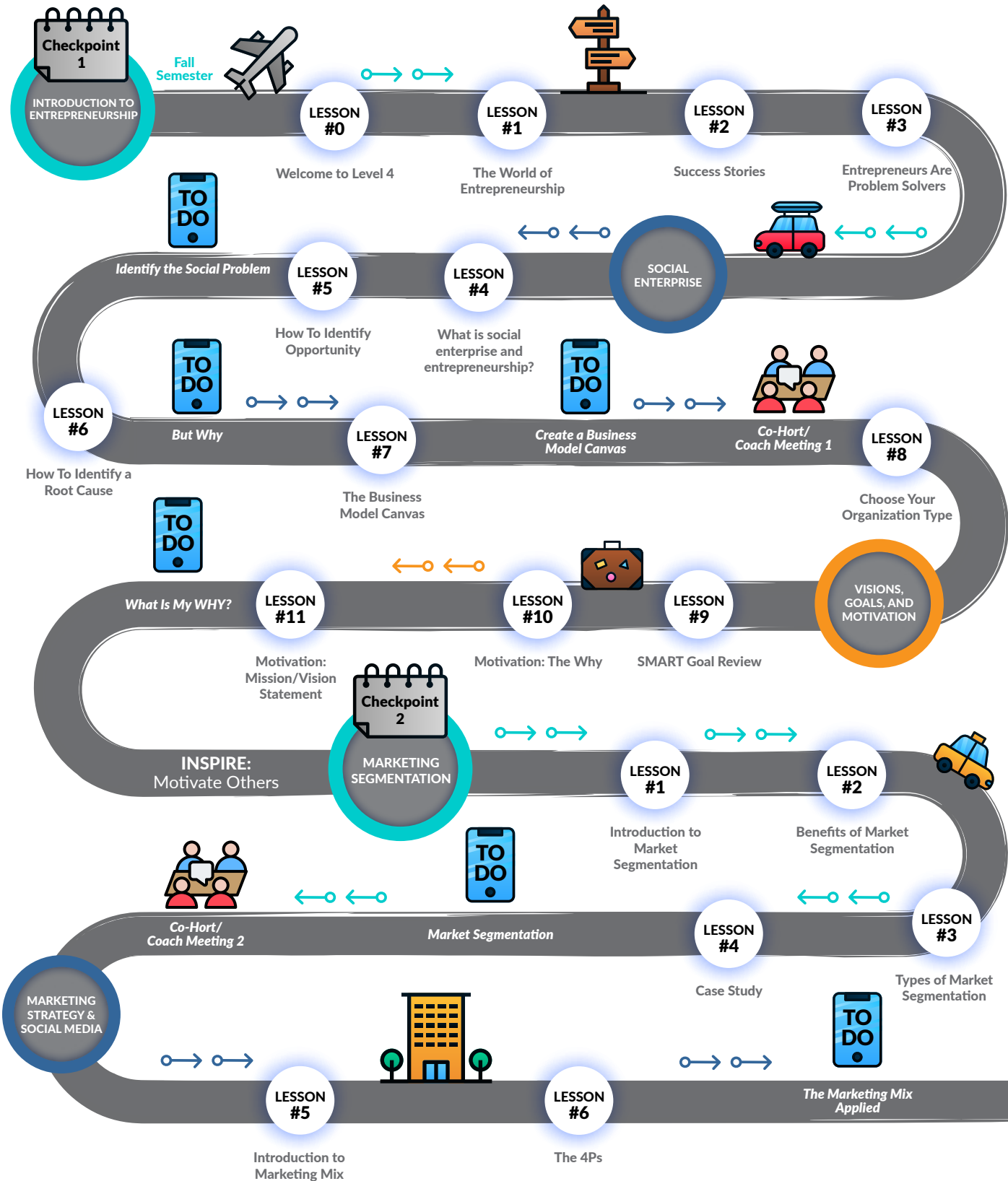


Level 4 roadmap and benchmarks are time-bound and project based; designed to keep you on pace with your cohort, scheduled sessions with your coach, and prepared for your capstone presentation to earn your Leadership Certificate from Emory University's Goizueta Business School!

# LEADERSHIP CONNECT LESSON ROADMAP: LEVEL 4

## SOCIAL ENTERPRISE CAPSTONE

TOTAL EARNABLE POINTS: 1080  
34 LESSONS | 14 TO-DO ACTIVITIES



# LEADERSHIP CONNECT LESSON ROADMAP: LEVEL 4 (cont.)

## SOCIAL ENTERPRISE CAPSTONE

TOTAL EARNABLE POINTS: 1080  
34 LESSONS | 14 TO-DO ACTIVITIES

