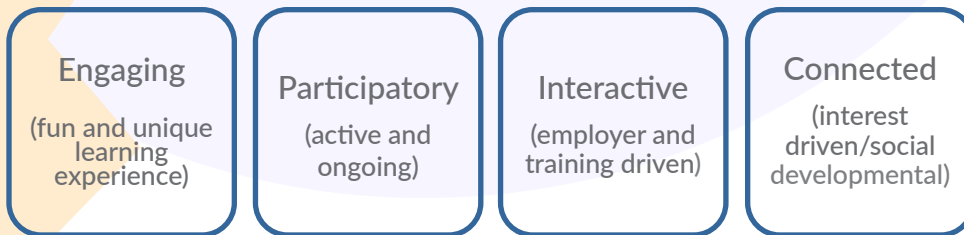




Leadership Connect

Leadership Connect® is 21st Century Leaders' proprietary online learning platform designed for and used by high school aged students to learn about their role as a leader and discover and demonstrate their leadership abilities and career interests. Students can enroll at any time in their high school career and be connected with their peers through a series of gamified lessons, hands-on activities, and exclusive opportunities. 21CL designed this platform with an EPIC approach and the following goals:



21st Century Leaders is proud to partner with Atlanta-based company RALI since 2017, in which platform Leadership Connect content is housed. This learning and change digital company uses proven “learn, do, inspire” methodology to create an online journey that drives the adoption of mindsets and behaviors to improve performance outcomes.



Program Highlights

- Flexible, quick, and self-guided program
- Gamified content
- Point-based incentives with rewards, special experiences, in-person programming, and digital badging
- Action-based with activities done at home, school or in their community
- Positive peer encouragement, connection & competition with discussion board and leaderboard
- Student mentoring opportunity with business professionals
- Multi-level program with over 130 modules
- Assessments implemented before and after each level
- Curriculum guide with course outline and targeted outcomes for parents and school and community leaders

Lesson Topics

- Lessons centered on core leadership competencies (communicating effectively, self-development, building effective teams, problem solving, integrity & trust, action oriented, and career ambition)
- Social & Emotional Intelligence
- Diversity & Inclusion
- Financial Literacy
- Professionalism and Career Exploration
- Civic Engagement
- Health & Wellness
- Entrepreneurship
- Social Enterprise Capstone



Level Flow



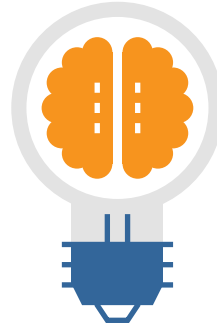
Level 1:

The Journey
7 Core Leadership
Competencies +
Career Exploration
47 modules



Level 2:

Social & Emotional
Intelligence
SEI & Diversity &
Inclusion
46 modules



Level 3:

Life Ready
Financial Literacy,
Health & Wellness,
Civic Engagement,
Professionalism
30 modules



Level 4:

Social Enterprise
Capstone
Earn a Leadership
Certificate from Emory
University's Goizueta
Business School
50 modules

Module Activity Highlights

Learn Activity: They serve as the main informational piece of Leadership Connect. With learn activities, students take on a series of challenges in which they can answer questions, read documents, watch videos, and/or engage in gamified activities in order to learn the desired topic and earn points.

Question Type: Once inside a lesson, there are a variety of question types that test comprehension. From free response to poll questions to multi-select to fill-in-the-blank, variety drives engagement and reduces monotony.

Do Activity: This activity is done after a lesson or series of lessons which prompts them to engage in an action-based activity outside of the system urging students to put what they've learned into action. The number of extra points that can be earned from this is displayed at the bottom and due dates can be set for these activities. The system administrator, teacher, or mentor can verify the students work before points are rewarded.

Inspire Activity: These are engagements that are optional for students and serve as a way for them to earn extra points as well as incentivize positive encouragement for themselves and for their peers!

For more information visit
www.21stcenturyleaders.org/student-programs